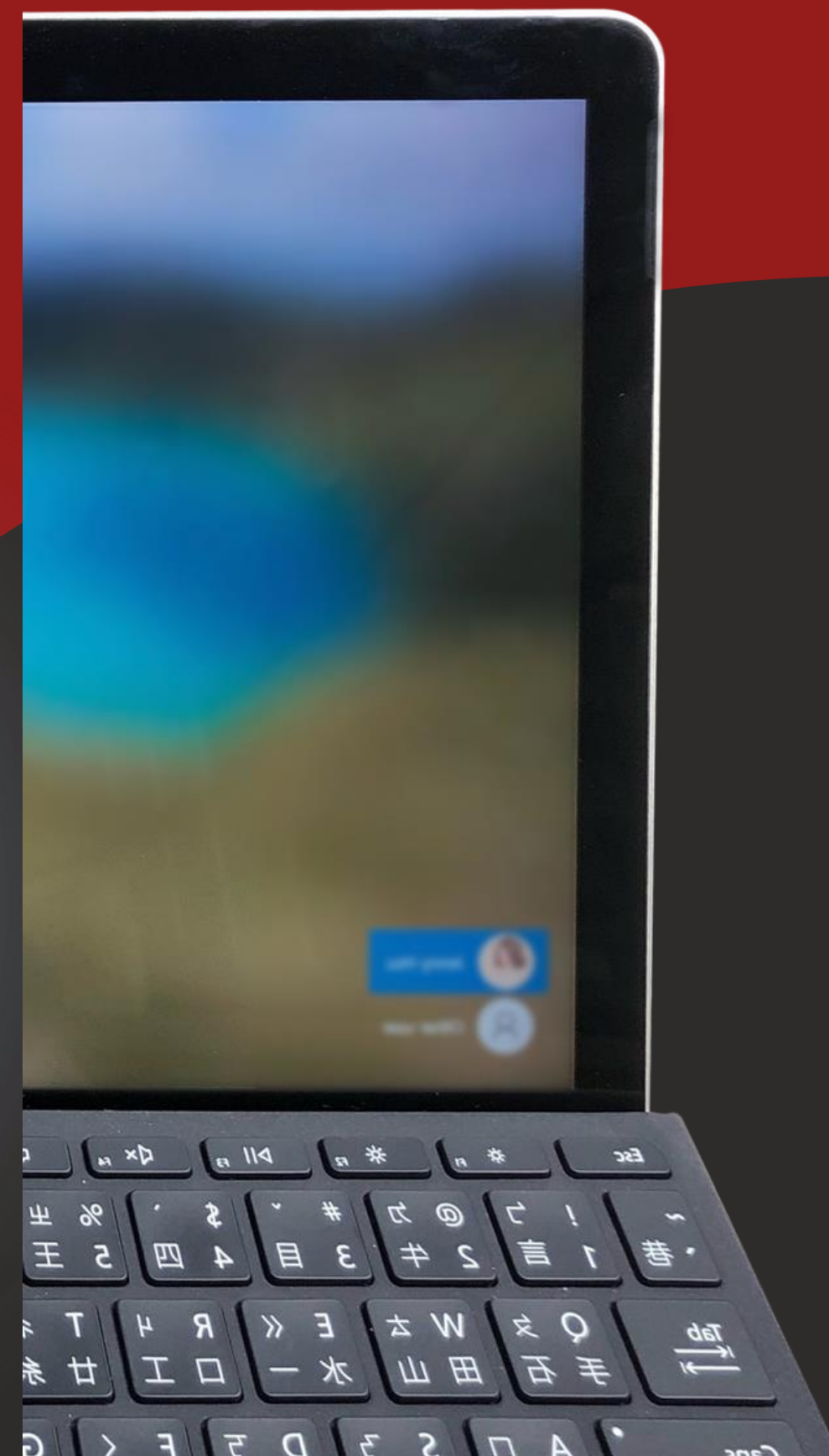




Quickstart Guide



AUTHTREND



Contents

1

Overview

2

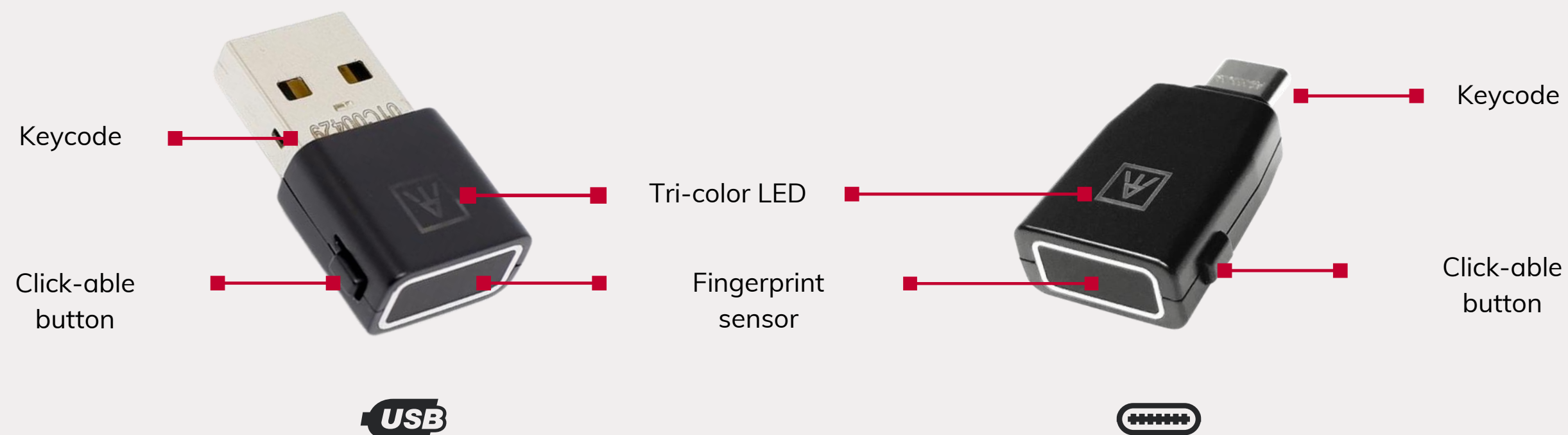
Set up your
ATkey

3

Add / Remove Fingerprints

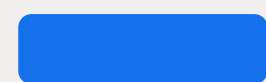


ATKey.Pro Overview



A FIDO2-certified, side-mounted fingerprint security key that enables passwordless authentication in less than a second from any angle.

What the LEDs mean



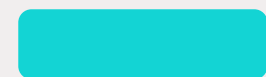
Blue LED ON



Green LED ON



Red LED ON



Cyan LED ON



Blue LED flashes



Cyan LED flashes



White LED flashes



Green LED flashes



Power ON

Fingerprint verification success

Fingerprint verification fail / Erase fingerprint / Reset key

OS has not yet recognized this key

Need to verify fingerprint

Need to touch

Standalone enrollment (flashes from slow to fast)

Verify fingerprint to start 'Standalone Enrollment'
(If there is any registered fingerprint)





Blue LED ON



Green LED ON



Red LED ON



Blue LED flashes



Power ON

Fingerprint verification success

Fingerprint verification fail

Need to verify fingerprint

Set up your ATKey and enroll fingerprints first

There are several available tools that can be used for set up security keys.





Key Setup

- Windows built-in Security Key Manager

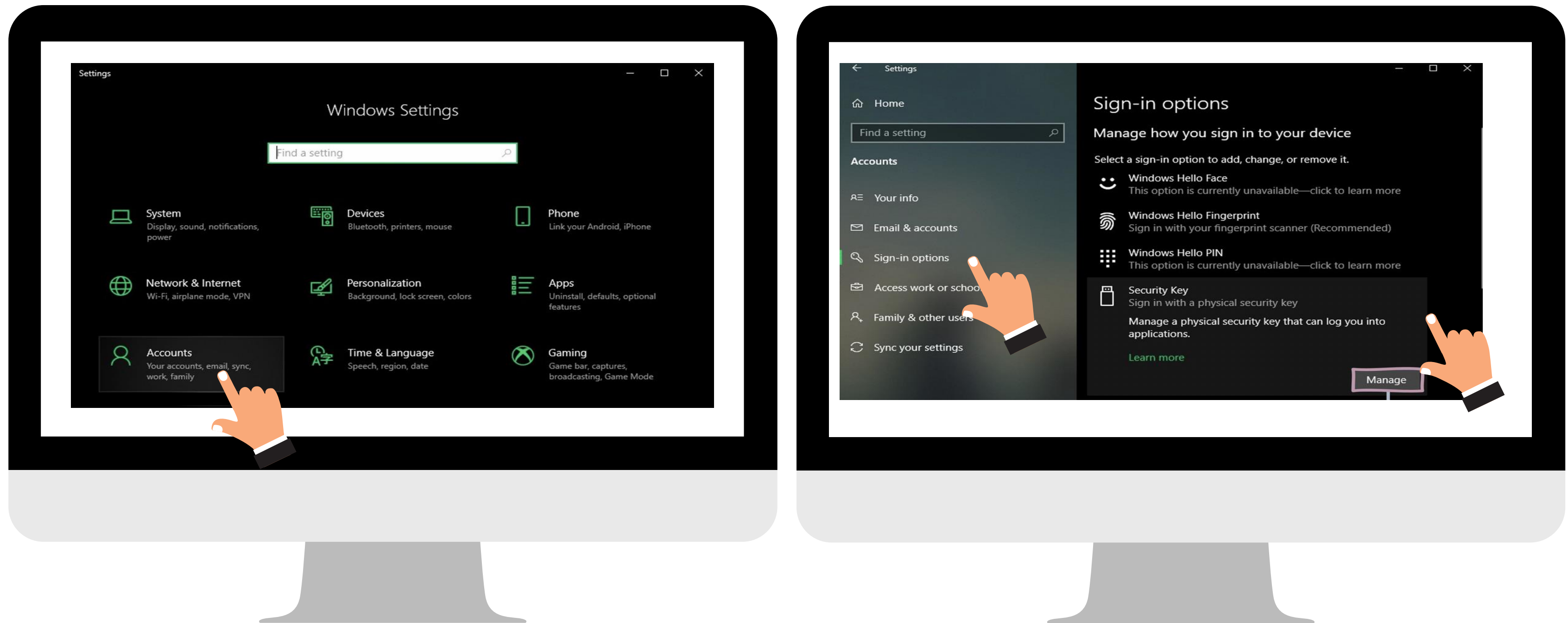


1

Open Windows Settings

"Settings" > "Accounts" > "Sign-in options" > "Security Key"

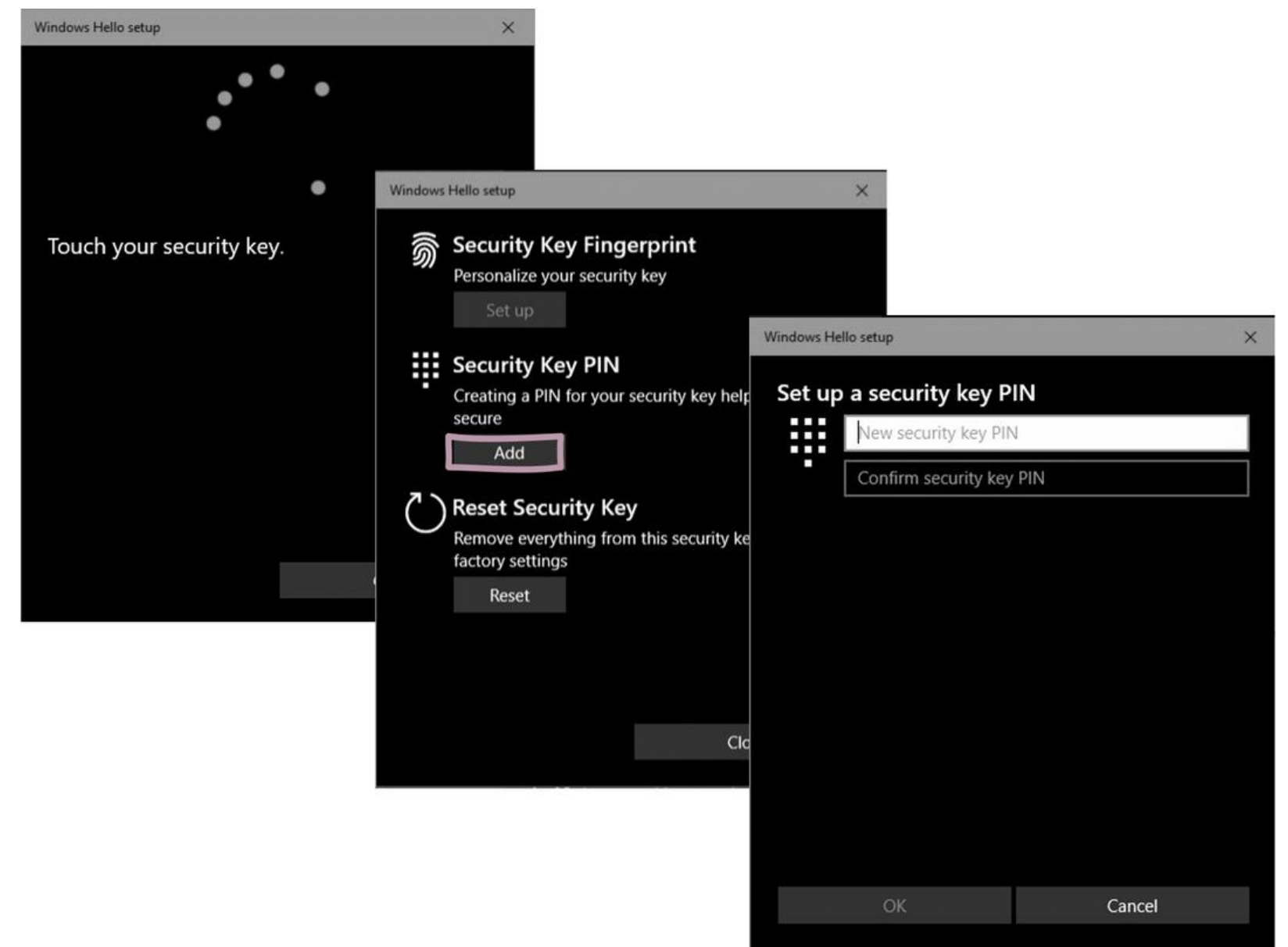
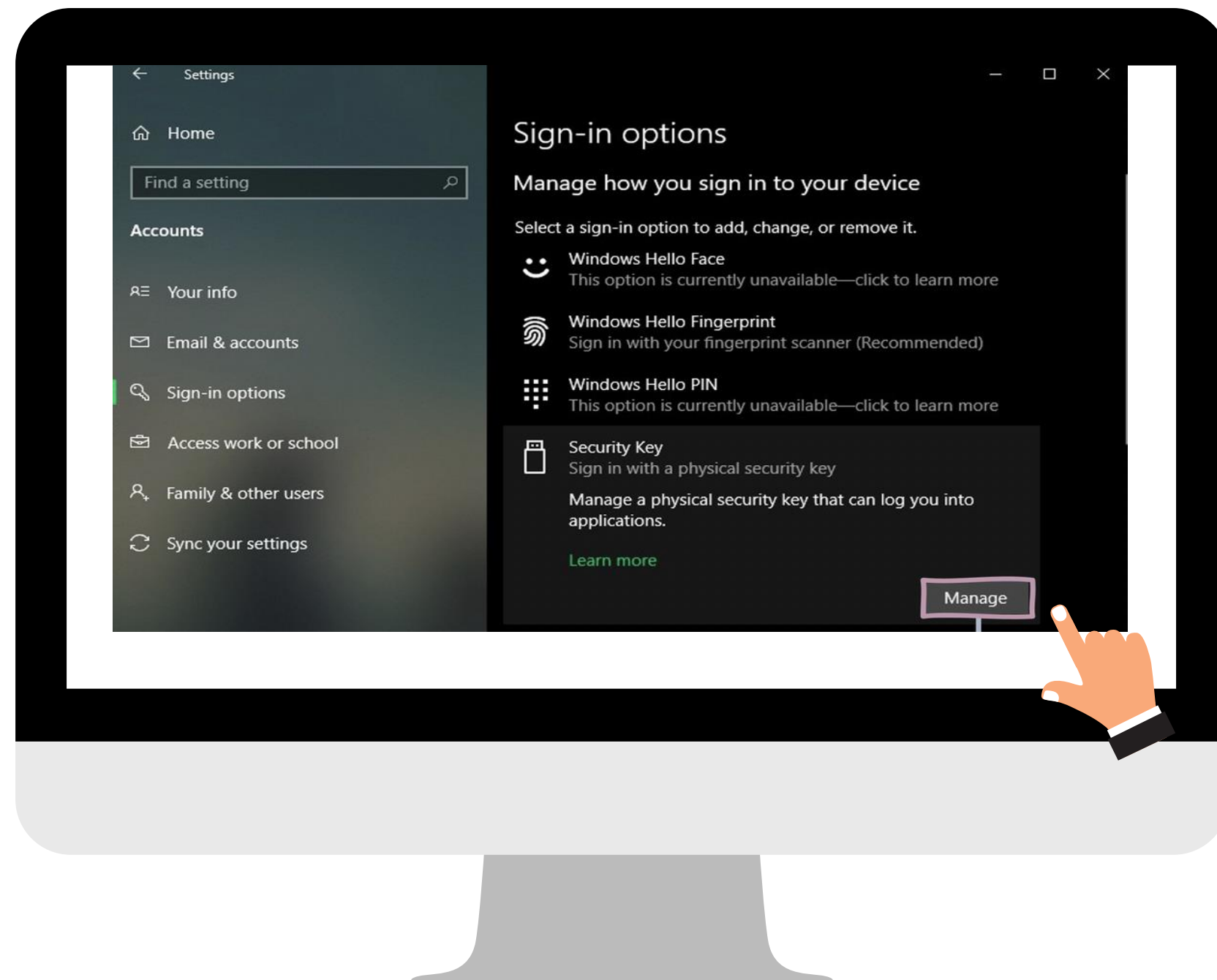
Availability: In Windows 1003 and above.



2

Set the PIN of ATKey

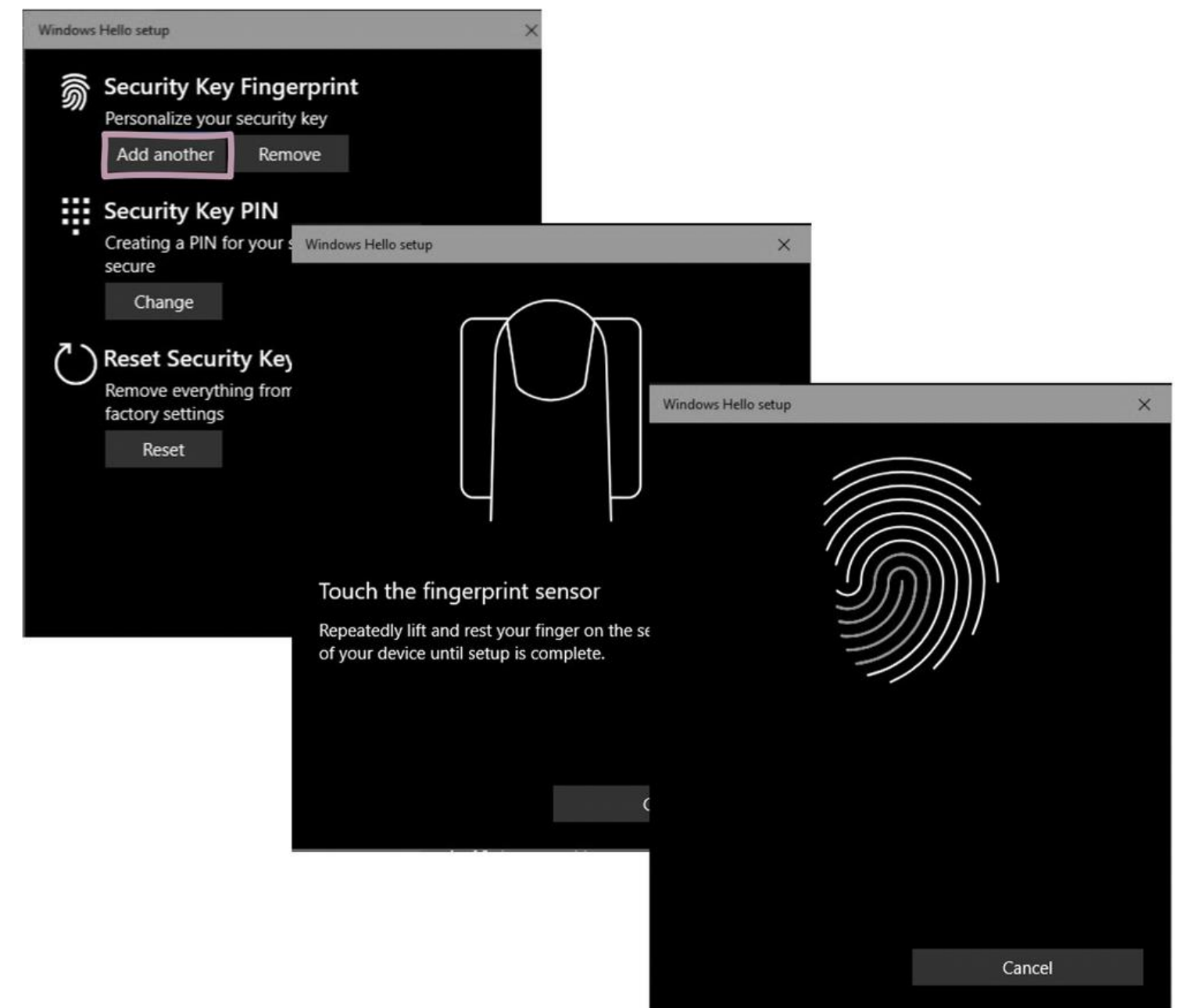
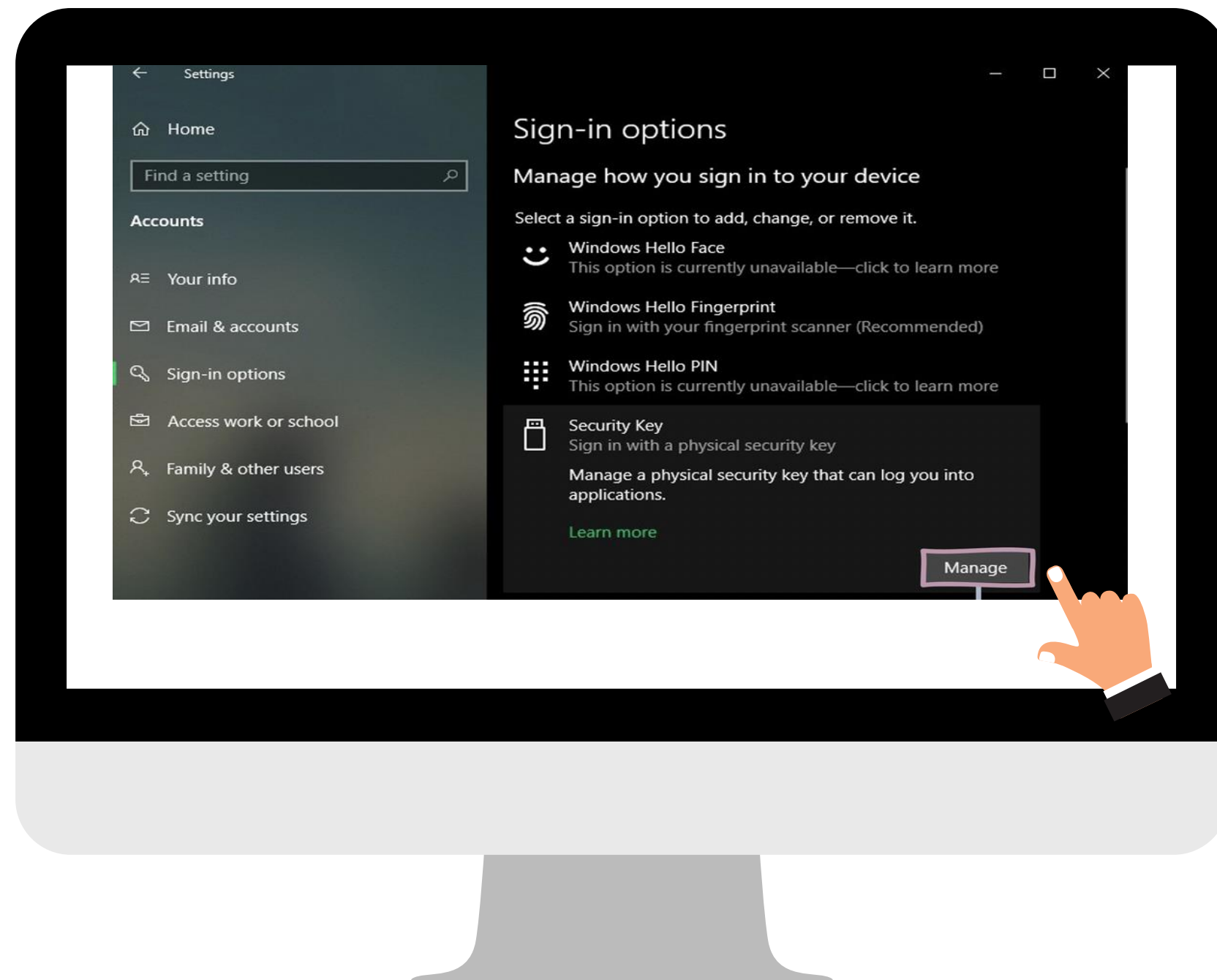
Add "Security key PIN" first, the PIN will write into ATKey.Pro.



3

Add Your Fingerprint

Set up "Security Key Fingerprint", type-in PIN code and follow the hints to enroll fingerprint until "All Set!"





Key Setup

- Chrome built-in Security Key Manager

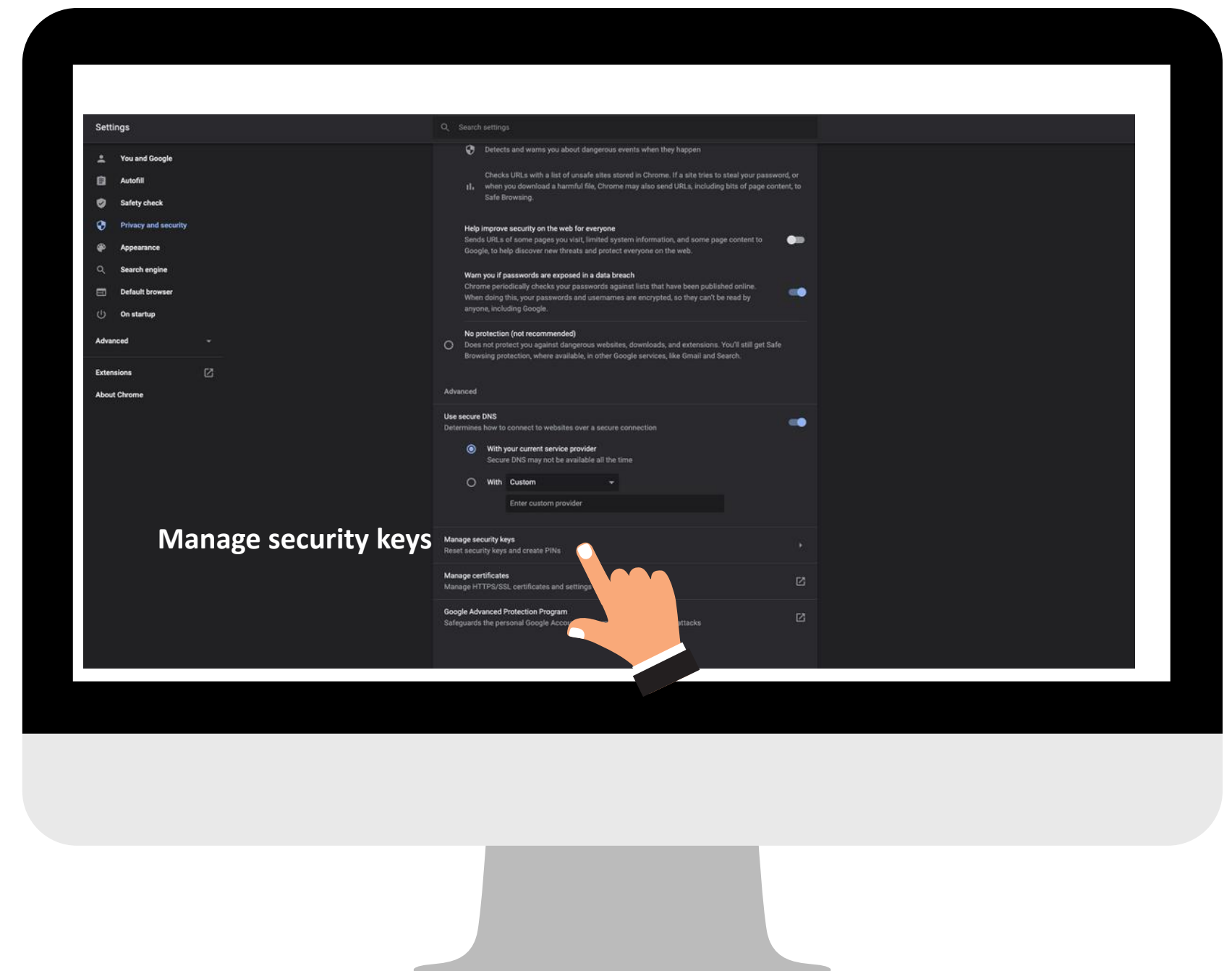


1

Open Chrome Settings

"Settings" > "Privacy and security" > "Manage security keys" > <chrome://settings/securityKeys>

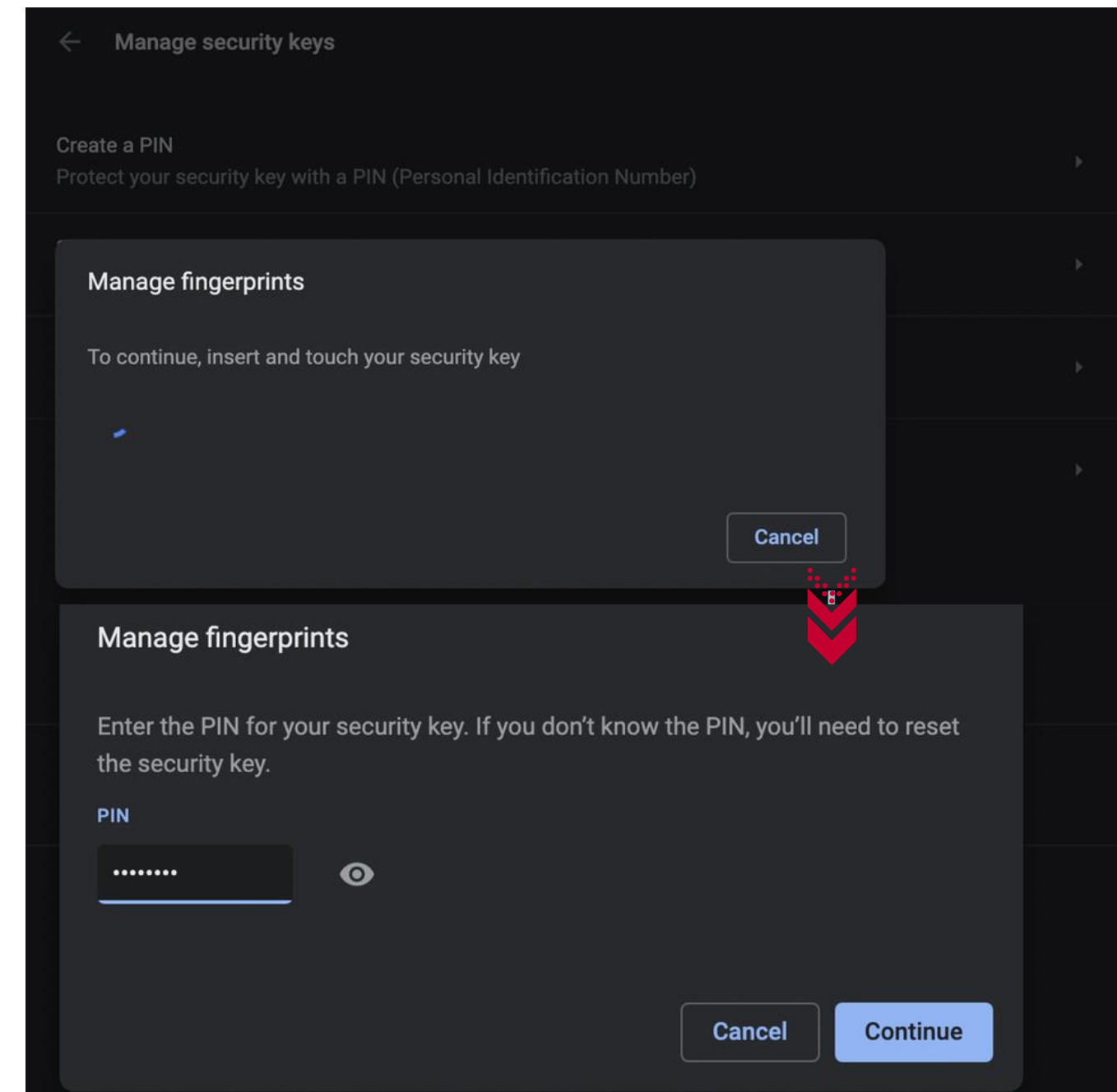
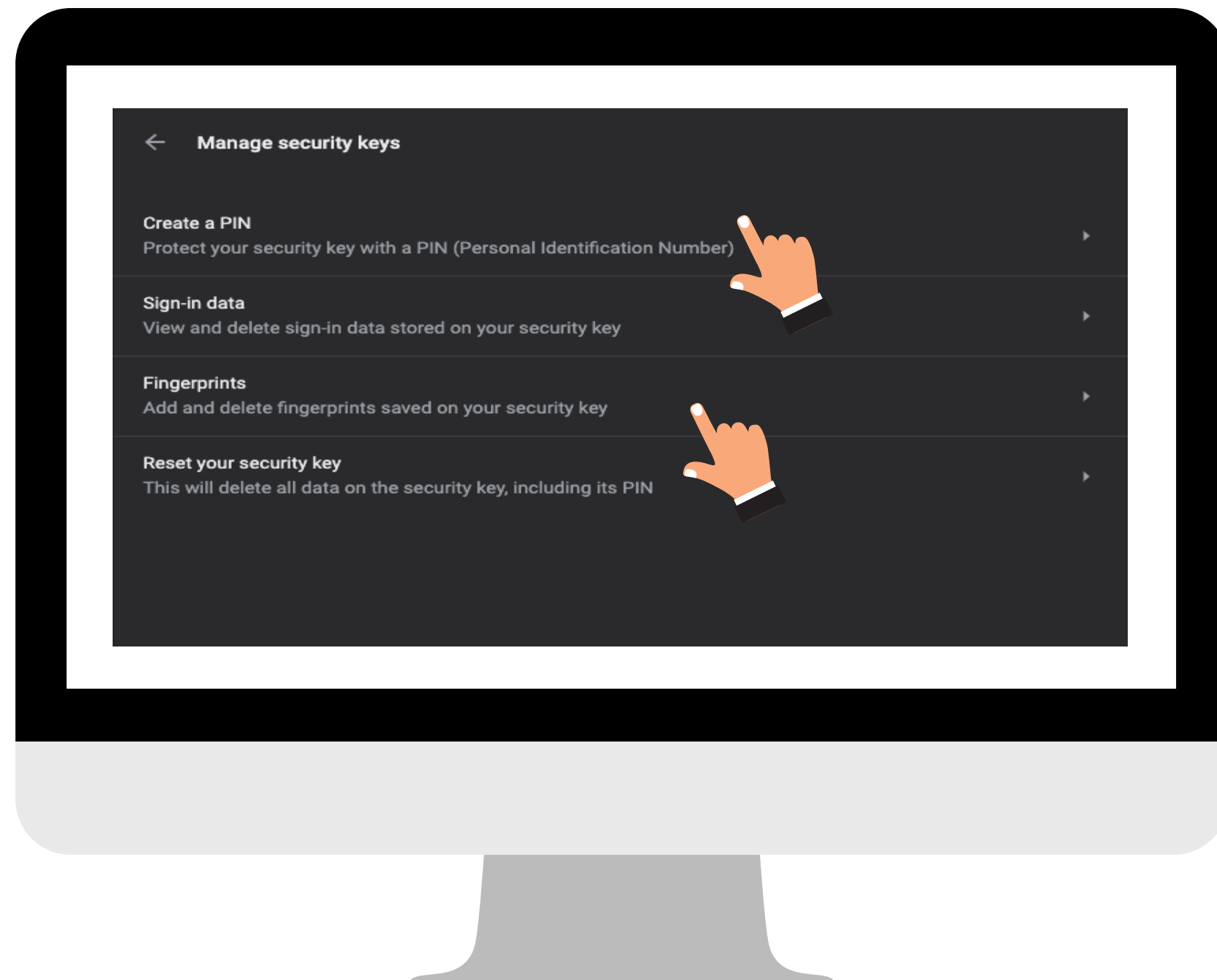
Availability: In the latest Chrome browser in ChromeOS, macOS and Linux core system.



2

Set The PIN and Fingerprints of ATKey

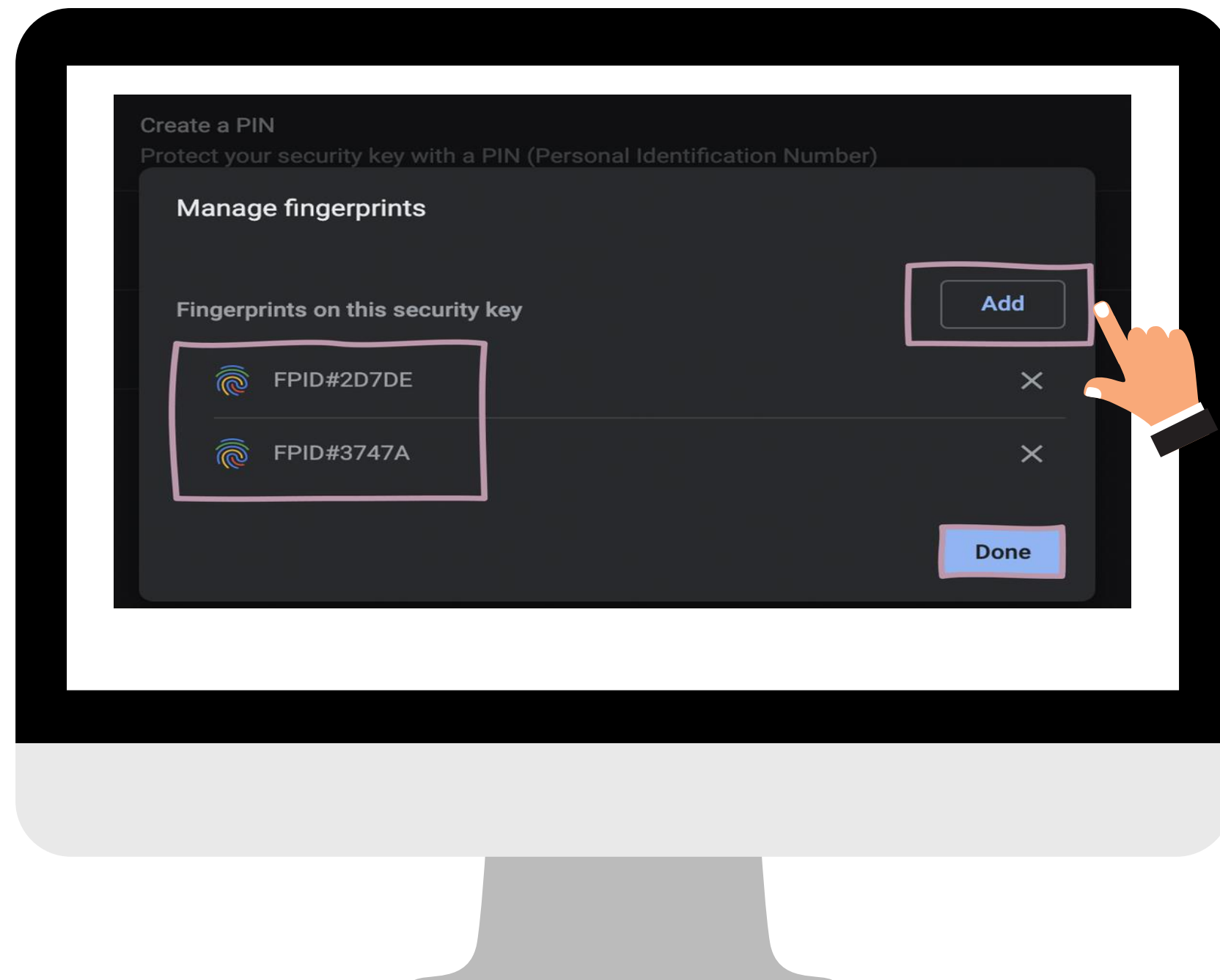
You can manage PIN, fingerprints, and credentials inside the key.
Create a PIN first and start to add your fingerprints.



3

Add Your Fingerprint

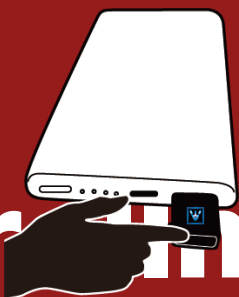
After finish adding, you can assign the name of your enrolled fingerprint.





Key Setup

- Standalone Enrollment



1

Enroll Fingerprints through Standalone Enrollment

With no need for any device or application download.

- Availability: Power supply from any USB port (Highly recommended to use a power bank)
- Please enroll a fingerprint at the same/similar finger position



- Insert ATKey.Pro into the USB port.
- LED Cyan ON.
- Press the side button 3 times quickly to get into Standalone enroll mode.
 - ✓ LED White flash: please touch your fingerprint, after touch, LED turns to Green means this enrollment is good, LED turns to RED means this enrollment not good.
 - ✓ So touch fingerprint at every White Flash, it may need 12 times good enrollments, until LED stays on "Cyan", then the enrollment is done.



Tutorial
video

- If you want to quit "standalone enrollment", press the button and the LED will turn to Blue, back to the normal state.
- If there are any enrolled fingerprints in your ATKey.Pro, LED will ● ● ▨ Green flash first on step 4, that you need to verify registered fingerprint to start enrolling new finger.

Enjoy your biometric authentication experience!

Download the user manual from here:



Powered by **AUTHTREND**

Questions?
Let us know!



www.authentrend.com/atkey-pro



contact@authentrend.com